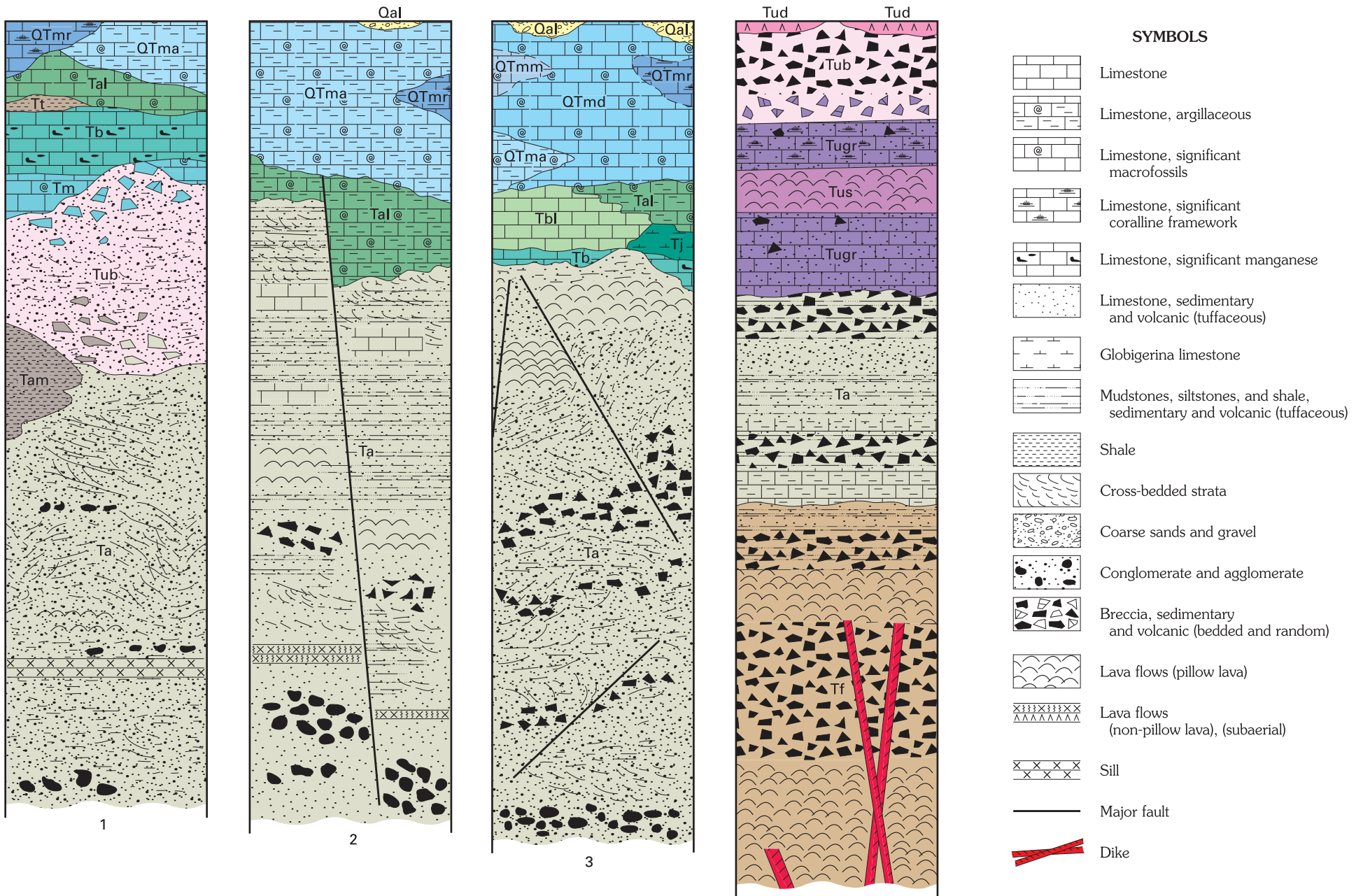


COMPOSITE STRATIGRAPHIC SECTIONS

Composite stratigraphic sections showing probable vertical bedrock sequence. Maximum limestone section thicknesses, in feet, shown below in parentheses; formation abbreviations and color consistent with 2008 revision of 1:50,000 geologic map



- Section** Approximate locations indicated with asterisk on 8 1/2 x 11" geologic map
- (1) Togcha River Valley–Talofofo Golfing Resort (QTma + Tal + Tb + Tm = 300 feet)
 - (2) Route 4: Sinajana–Ordot–Chalan Pago (QTma + Tal = 500 feet)
 - (3) Mt. Santa Rosa–Back Gate_Yigo (QTmd + QTmm + Tal + Tb = 600 feet)
 - (4) Umatac–Mt. Schroeder–Merizo area (Tugr = 300 feet)

Sections extrapolated from surface geology shown on revised 1:50,000 geologic map of Guam.